



# INDUSTRIAL DUTY

## Self-Priming Utility Pumps

### Model 2851-96

- **Aluminum Construction**
- **Handles Liquids with Specific Gravity up to 1.6**
- **1" NPT Suction and Discharge Ports**
- **1/3 HP ODP Motor with 8 ft. 115 VAC Power Cord**
- **Includes (2) Garden Hose Adapters**
- **Self-cleaning Impeller**
- **Max Suction Lift is 15 ft. Without Foot Valve**
- **Max Working Pressure is 75 PSI**
- **Max Temperature is 180° F**
- **Viton Mechanical Seal and O-Ring**

AMT Model 2851-96 is designed for liquid transfer and general dewatering such as emergency water supply, storm drains, pool/spa tub drainage and select chemical transfer up to 1.6 specific gravity that are compatible with all pump components. Portable, lightweight unit with handle and base.



Model 2851-96

### Model 5670-96

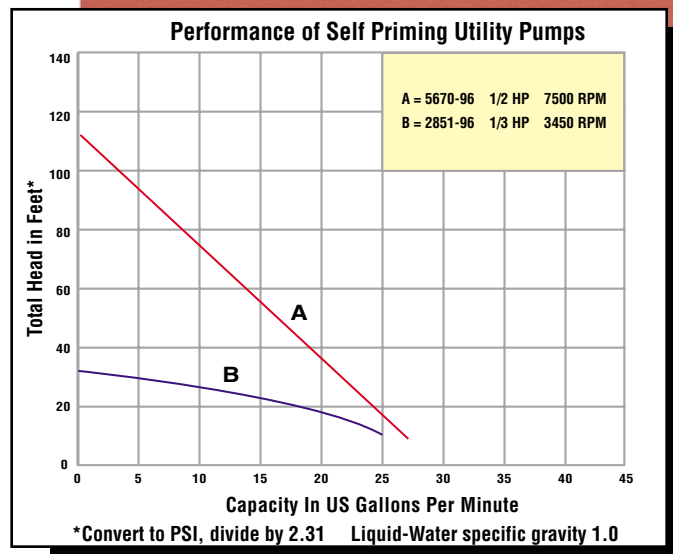
- **Aluminum Construction**
- **Plastic Impeller Handles 1/4" Solids**
- **3/4" NPT Suction and Discharge Ports**
- **1/2 HP 7500 RPM ODP Motor with Replaceable Brushes and 8 ft. 115 VAC Power Cord**
- **Includes (2) Garden Hose Adapters and Suction Strainer**
- **Buna N Gaskets**
- **Max Suction Lift is 15 Ft.**
- **Built-in Carry Handle**
- **Max Working Pressure is 75 PSI**
- **Max Temperature is 160° F**
- **Buna N Mechanical Seal**

Model 5670-96 is designed for portability and ease of operation. Ideally suited for wash down, emergency water supply, swimming pool/spa tub drainage, storm drainage and many other water transfer applications.

AMT Utility Pumps are reliable, cost effective, low maintenance and many are readily available "Off-the-shelf" for fast 24 hour shipment. For use with non-flammable liquids compatible with pump component materials.

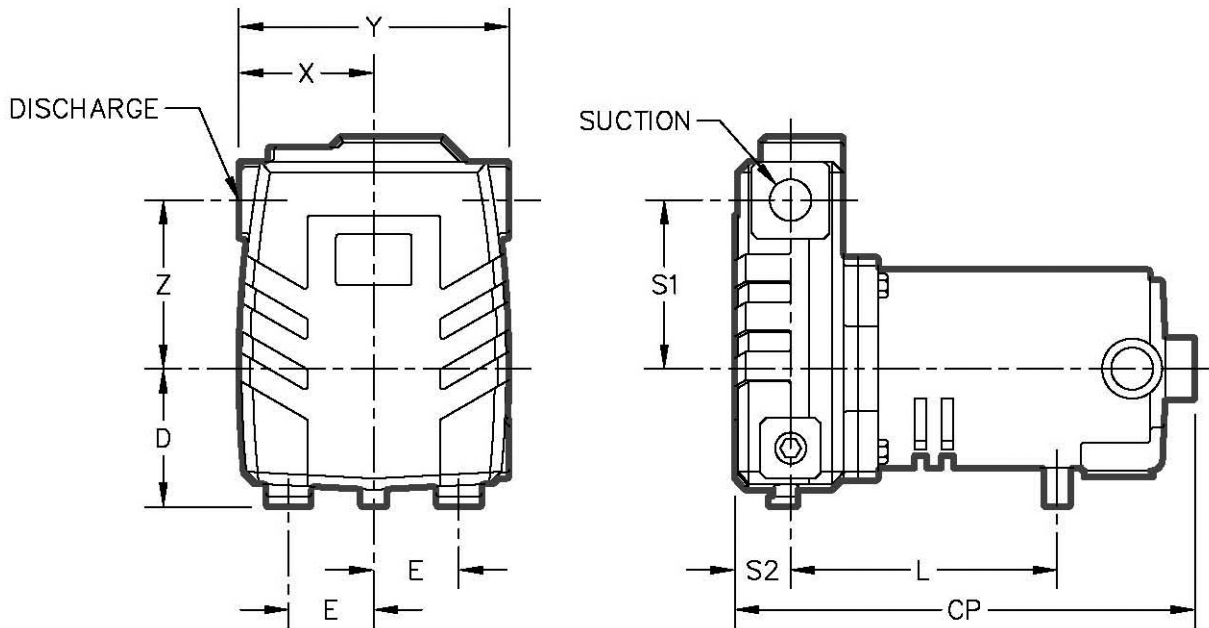


Model 5670-96



Viton® is a registered trademark of E. I. DuPont

# Self-Priming Utility Pumps



Model	Curve	Suc*	Dis*	CP	D	E	L	S1	S2	X	Y	Z
2851-96	B	1	1	17.1	3.5	2.2	2.2	2.4	2.8	3.0	6.0	3.6
5670-96	A	3/4	3/4	9.6	2.9	1.8	5.6	3.5	1.2	2.8	5.6	3.5

## Standard Features 2851-96

- Aluminum Construction
- 1" NPT Suction and Discharge Ports
- 1/3 HP ODP Motor with 8 ft. 115 VAC Power Cord
- Includes Garden Hose Adapters
- Self-cleaning Impeller
- Max Suction Lift 15 ft.
- Max Working Pressure 75 PSI
- Max Temperature 180° F
- Viton® Mechanical Seal & O-Ring
- "Off-the-Shelf" Availability

## Standard Features 5670-96

- Aluminum Construction with Plastic Impeller
- 3/4" NPT Suction and Discharge Ports
- 1/2 HP 7500 RPM ODP Motor with 8 ft. 115 VAC Power Cord
- Includes (2) Garden Hose Adapters and Strainer
- Buna N Gaskets and Mechanical Seals
- Max Suction Lift 15 Ft.
- Built-in Carry Handle
- Max Working Pressure 75 PSI
- Max Temperature 160° F
- "Off-the-Shelf" Availability

Model	Description/Type of Pump	Ship Wt (Lbs.)	RPM	HP	Port Size Suc X Dis (NPT)	Basic Constr.	Seal Type & Elastomer/Faces	VAC	FL Amps	Motor Encl.
2851-96	Self-Priming Utility Pumps	42	3450	1/3	1" x 1"	Aluminum	Viton® Carbon Ceramic	115/230	8/4	ODP
5670-96	Self-Priming Utility Pumps	15	7500	1/2	3/4" x 3/4"	Aluminum	Buna Carbon Ceramic	115	8	ODP

Viton® is a registered trademark of E. I. DuPont